



Quinzhee Cowl

©Cat Ware
2022

About the pattern

/ˈkwɪnzɪ/

“A Canadian snow shelter that is made from a large pile of loose snow which is shaped then hollowed to create a domed chamber inside. A quinzhee can be made for winter camping and survival purposes, or for fun.”

The Quinzhee Cowl is designed to keep you warm if you ever found yourself taking shelter in a quinzhee! The slim fit makes it a perfect accompaniment to a high-necked coat. But there is no compromise on warmth; the squishy texture of the quinzhee cable rib coupled with the Suri alpaca ‘fluff’ makes this a super toasty addition to your cold weather wardrobe!

About the designer

Hi! I’m Cat! I first learned to knit from my Mum and Nan when I was little but only caught the ‘knitting bug’ in my 20’s. After practicing as a Midwife in the NHS for nearly 10yrs, I am now lucky enough to be following my crafty dreams designing knitwear!

If you fancy browsing my other designs and keeping up to date with my crafty antics, do follow me on the socials and take a mooch at my website!



Sharing your beanie on social media? I would love to see!! Tag me on Instagram [@catcraftyknits](#) and use the hashtags #quinzheecowl and #catcraftyknits.

Having trouble? Please don’t hesitate to contact me:
catcraftyknits@gmail.com

Copyright ©Cat Ware. All rights reserved. Pattern intended for personal use only

The Specifics

Sizing

The Quinzhee Cowl is designed to be one size only. However, due to its construction, customisation is easy and instructions on how to do so are given throughout the pattern.

Finished circumference

20" (51cm) - customisable

Finished depth

10" (25.5cm) – customisable

Materials

Yarn

The sample cowl is knit with Felt Fusion Superwash Merino/Nylon Sock 425m (465yds) per 100g held together with Felt Fusion Brushed Suri Alpaca 4ply 400m (437yds) per 100g both in the colourway 'Sea Foam'.

Suggested Yarns

Any Merino/Nylon Sock yarn 425m (465yds) per 100g. Held together with:

Any Brushed Suri Alpaca 4ply 400m (437yds) per 100g.

The Brushed Suri Alpaca 4ply base is a little less common so as an alternative, a 4ply sock yarn coupled with the more common brushed Suri Alpaca Lace should give the same gauge, but please do swatch to double check and adjust needle size if necessary! The darker blue cowl is knit with Mohair lace. The fabric created is slightly lighter and airier than the 4ply brushed Suri but the gauge and overall effect of the cowl remains the same.

Required meterage (yardage)

240m / 263yds of EACH of the yarns used. This equates to 1 skein of Merino/Nylon Sock yarn 425m (465yds) per 100g AND 1 skein of Brushed Suri Alpaca 4ply 400m (437yds) per 100g.

OR substitute the Brushed Suri Alpaca 4ply for 1 skein of Lace Weight Brushed Suri Alpaca 300m (328yds) per 50g.

Gauge

24 stitches and 28 rounds = 4x4in (10x10cm).

Swatch in pattern, using the larger needle size.

Measure the swatch after blocking, laid flat but not stretched or pinned.

Needles

16" (40cm) length circular needles in sizes 4mm (US size 6) and 5mm (US size 8) OR size needed to obtain gauge.

5mm (US size 8) DPN's (or size needed to obtain gauge) may be used to make the i-cord tie, if preferred.

Spare circular needle the same size needed for gauge or smaller.

Notions

Stitch marker.

Cable needle, if required*.

Waste yarn and a crochet hook for the provisional cast-on.

Required Techniques

3 stitch i-cord.

[Provisional cast-on](#).

Knitting in the Round.

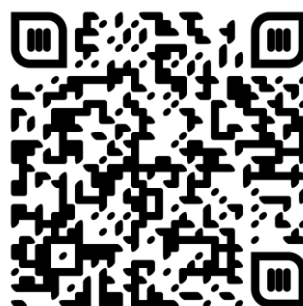
[3 needle join](#) for the folded brim

Cable knitting.

Tubular bind-off which requires [grafting](#) stitches.



Enter gauge and desired finished cowl measurements (circumference and depth) to generate your bespoke pattern. Benefit from easy-to-follow instructions with integrated row/round counting and progress tracking.



Get the 'Pattern Manager' app

Click or scan the QR code to download the pattern

Instructions

I-cord

Using the larger needle size, CO 3 sts.

If using DPN's: without turning the needles, work row 1 as follows:

Row 1: slide sts to the other end of the needle, k3.

If NOT using DPN's: without turning the needles, work row 1 as follows:

Row 1: sl3 sts onto L needle, k3.

For both methods: repeat row 1 until the i-cord measures approximately 45" (114.5cm) OR desired length. If altering the circumference of the cowl, make the i-cord 2.25 x longer than the circumference measurement (or longer, if desired).

For example, the sample cowl circumference is 20" (51cm). The i-cord length is calculated as:

20" (51cm) x 2.25 = 45" (114.5cm).

Last row: k3tog.

Break yarn and pull through the last st.

Top Hem

If you wish to alter the circumference of your cowl, ensure you cast on an **even** number of stitches in a multiple of 3. Presuming gauge has been met, there are 3 stitches in the cable pattern and for every cable repeat added, the circumference will increase by 0.5" (1.25cm).

Using waste yarn and the smaller needle size, provisionally CO 120 sts.

Note: The fluff yarn could make unpicking the provisional cast-on more difficult so it may be beneficial to work the setup row omitting the fluff yarn and then join it to start round 1.

Setup Row: k to end. Do not turn. Join in the round being careful not to twist the sts, place BOR.

Round 1: *k1, p1; repeat from * to end. Repeat round 1 a TOTAL of 15 times OR until the rib measures approximately 1.5 times the desired finished depth.

Abbreviations

BOR	Beginning of round
cn	Cable needle
CO	Cast on
DS	Double pointed needle(s)
k	Knit
L	Left
LLI	Left listed increase
m	Metre
p	Purl
p2tog	Purl 2 together
pm	Place marker
R	Right
rm	Remove marker
RS	Right side
sl	Slip (purlwise)
sm	Slip marker
ssk	Slip, slip, knit
st(s)	Stitch(es)
tbl	Through back loop
WS	Wrong side
wyib	With yarn in back
wyif	With yarn in front
yds	Yards

Abbreviations and instructions for the cables can be found in the chart key.

Eyelet placement for i-cord tie

Two eyelets are spaced equally apart at the centre front of the cowl.

If you have altered the circumference, work out where to place the eyelets by dividing the number of CO stitches in half then subtract 3. This is the number of stitches to work in pattern before working the eyelet instruction (inside the [] brackets below).

Eyelet round: work 1x1 rib as established (k1, p1) for 57sts (or required no of sts), [yo, k2tog, p1, k1, p1, k1, yo k2tog], *p1, k1; repeat from * to last st, p1.

Continue working 1x1 rib (round 1) for 4 more rounds to complete the rib.

Inserting the I-cord and securing the brim
Temporarily remove the BOR marker.

From the inside of the cowl, thread one of the i-cord ends through one eyelet, and the other end through the other eyelet.

Unpick the provisional cast-on and place the sts onto a spare circular needle. Fold the cowl in half so the wrong sides are together and the i-cord is encased inside the rib. The needle holding the live sts should be at the front, and the provisional cast-on sts at the back.

Using the 3 needle join technique, k one st from the front needle and one from the back together, until all sts in the round have been worked.

Replace the BOR marker. The stitch count should be the same as the number of stitches cast on.

Cowl Body

Change to larger needles.

Setup Round: k to end.

Work the Quinzhee cable pattern until the cowl measures approximately 8.5" (21.5cm) OR 1.5" (4cm) shorter than desired length.

Bottom Hem

Switch to smaller needles.

Round 1: *k1, p1; repeat from * to end.

Work round 1 a TOTAL of 8 times OR half the number of rounds worked for the top hem less 2 rounds (to account for the tubular bind-off set up rounds).

If omitting the tubular bind-off and using the alternative stretchy bind-off (see below) then work round 1 a TOTAL of 10 times OR half the total number of rounds worked for the top hem.

Tubular bind-off

Setup row 1: *k1, sl1 wyif; repeat from * to end.

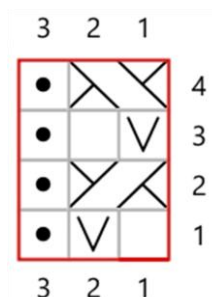
Setup row 2: *sl1 wyib, p1; repeat from * to end.

With a spare circular needle, sl all the k sts onto the working needle and the p sts onto a spare needle.

Break yarn, leaving a tail 4x the length of the edge to be bound off.

Align the needles and graft the sts from both needles together.

Quinzhee Cable Pattern



Round 1: *k1, sl1, p1; repeat from * to end.

Round 2: *1/1 RC, p1; repeat from * to end.

Round 3: *sl1, k1, p1; repeat from * to end.

Round 4: *1/1 LC, p1; repeat from * to end.

	knit
	purl
	Slip stitch with yarn in back
	1/1 LC: sl1 st onto cn and hold in front, k1, k1 from cn
	1/1 RC: sl1 st onto cn and hold at back, k1, k1 from cn
	Pattern repeat

Alternative stretchy bind-off

k1, *p1, transfer both sts back onto left needle, p2tog, k1, transfer both sts back onto left needle, k2tog tbl; repeat from * until all sts have been bound off.

Finishing

Weave in ends. Wet block to measurements, lightly manipulate by hand and only pin if really necessary. Allow to dry flat. Due to the relatively open gauge, the cowl may relax over time and therefore benefit from a gentle 're-block' every once in a while!